



GREENSHEETS

29 MAY 2026

Education jobs in Berkshire and surrounding areas

Delivered [direct to your inbox](#) each week in term time and available via our searchable [online directory](#).

NEW JOB ALERTS TAILORED TO YOU

Get notified when new jobs relevant to you become available. Visit our website to create your custom job alert!



This week...

TEACHING

Featured vacancies:

[Headteacher](#)

Spurcroft Primary School and Nursery
Thatcham

[Class Teacher](#)

Aldermaston C.E. Primary School
Aldermaston

[Initial Teacher Training Lecturers in Secondary Education, 11-16 Years](#)

Farnborough College of Technology
Farnborough

NON-TEACHING

Featured vacancies:

[Chief Financial and Operating Officer;](#)

[Cover Supervisor](#)

Collingwood College
Camberley, Surrey

[Lead Teaching & Learning Assistant](#)

[- SEND Unit](#)

Castleview School
Slough

[SEN Specific Teaching Assistants](#)

Thatcham Park CE Primary School
Thatcham

Also in this edition....

[Teacher Tapp questions give snapshot of KS2 SATs impact](#)

More than two thirds of primary teachers saw pupils in distress

[Record half term heat sees call for maximum working temperature](#)

Education outcomes set to be increasingly impacted by extreme weather

[FREE Primary PE Conference to be hosted by Reading FC Community Trust](#)

GREENSHEETS is proud to support this event

NEXT EDITION: 5 JUNE 2026

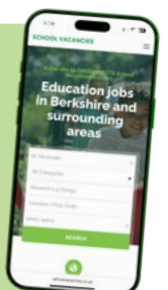
ADVERTISE NOW Simple Process, Low Cost.

Emailed weekly in term time to **6000+** subscribers and listed on our **online jobs directory**, Greensheets gives you a direct line to educators and active job seekers.

 **6,000+**
SUBSCRIBERS

 **28 YEARS**
OPERATING

Your go-to platform for teaching and education jobs in central southern England.



TEACHING

PRIMARY EDUCATION INCL. NURSERY

Headships.....	3
Leadership Scale.....	3
Key Stage 2.....	4, 5, 6
Key Stage not specified.....	5, 6, 7
Key Stage 1.....	7, 8
Early Years.....	7, 8

SECONDARY EDUCATION

Other Posts.....	9, 10
------------------	-------

SPECIAL EDUCATION

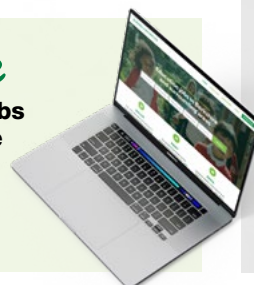
Leadership Scale.....	11
Other Posts.....	11
Resource Base/SEN Unit Posts.....	5

NON-TEACHING VACANCIES

Administration.....	12, 13
Caretaking & Cleaning.....	14
Early Years Practitioners.....	15
Extended Hours Care.....	16
Miscellaneous.....	17, 18
Support staff... ..	12, 19, 20, 21, 22, 23, 24, 25

Search Online

Visit our **online jobs directory** to browse all current listings...



Also in this edition....

NEWS

Teacher Tapp questions give snapshot of KS2 SATs impact.....	26
Record half term heat sees call for maximum working temperature..	27
FREE Primary PE Conference to be hosted by Reading FC Community Trust in June.....	28

NEW JOB ALERTS TAILORED TO YOU

Get notified when new jobs relevant to you become available. Visit our website to create your **custom job alert!**

schoolvacancies.co.uk/job-alerts



ADVERTS BY LOCATION

BUCKINGHAMSHIRE

Primary Education including Nursery.....	4
--	---

HAMPSHIRE

Secondary Education.....	9
--------------------------	---

HERTFORDSHIRE

Primary Education including Nursery.....	4
--	---

OXFORDSHIRE

Miscellaneous.....	17
Support Staff.....	19, 24

READING

Primary Education including Nursery.....	6
Support Staff.....	19, 25

SLOUGH

Early Years Practitioners.....	15
Support Staff.....	21

SURREY

Secondary Education.....	10
Administration.....	12
Support Staff.....	12

WEST BERKSHIRE

Primary Education including Nursery.....	3, 7
Special Education.....	11
Administration.....	13
Caretaking & Cleaning.....	14
Miscellaneous.....	17, 18
Support Staff.....	19, 20, 22, 24

WINDSOR & MAIDENHEAD

Primary Education including Nursery.....	3, 5, 6, 7, 8
Special Education.....	5
Caretaking & Cleaning.....	14
Early Years Practitioners.....	15

WOKINGHAM

Primary Education including Nursery.....	4, 5, 6
Special Education.....	11
Administration.....	12, 13
Extended Hours Care.....	16
Support Staff.....	19, 20, 23, 25

Search Online

Visit our **online jobs directory** to browse all current listings...





Spurcroft Primary School and Nursery

The future begins here...

Spurcroft Road, Thatcham RG19 3XX | Website: www.spurcroft.w-berks.sch.uk

Headteacher

Salary: L14 to L18 (£71,330 - £78,702)

Start date: January 2027

Closing date: Friday 19 June 2026

Spurcroft Primary School and Nursery in Thatcham, Berkshire, is situated between Newbury and Reading with good access to the M4. We are seeking to appoint an inspirational and dedicated headteacher to lead our school community.

We are a school with a clear sense of purpose and ambition. Our vision, 'the future begins here', reflects our commitment to ensuring every child leaves Spurcroft with the knowledge, skills and values they need for their future. We have an experienced and supportive senior leadership team, an engaged and active governing board, and a committed staff who care deeply about the children they serve.

The governing board is looking for a headteacher who can:

- provide strong, visible leadership
- drive continued improvement in pupil outcomes
- work collaboratively with staff, families and the wider community

The successful candidate will be joining a school with a clear improvement trajectory and a determination to succeed.

Visits to the school are warmly encouraged. Please contact Kirsty Warren, Clerk to the Governing Board (clerk@spurcroft.w-berks.sch.uk) to arrange a visit or for an informal conversation about the role.

Applications must be made using the standard application form.

CVs will not be accepted. The application form <https://pdfink.to/spurcroft/> and the full candidate information pack is available here <https://pdfink.to/applicationpack/>

Our School is committed to safeguarding and promoting the welfare of children and young people and expects all staff and volunteers to share this commitment. We will ensure that all our recruitment and selection practices reflect this commitment. All successful candidates will be subject to Disclosure and Barring Service (DBS) checks along with other relevant employment checks. This post is exempt from the Rehabilitation of Offenders Act 1974.



Holy Trinity C of E Primary School

School Lane, Cookham, Berkshire SL6 9QJ

DEPUTY HEAD TEACHER

**Salary in accordance with experience
& RBWM salary scales**

Holy Trinity C of E Primary School is a welcoming, nurturing and inclusive school where children are encouraged to thrive academically, socially and emotionally. Set in the heart of the beautiful village of Cookham, our school benefits from a wonderful learning environment, extensive outdoor space and a dedicated and supportive team.

The Headteacher and Governors are seeking to appoint an enthusiastic, inspirational and highly motivated Deputy Head Teacher who will also undertake a class teaching commitment. This role would suit either an experienced senior leader or an exceptional teacher ready to take the next step into leadership, with the ability to make a significant contribution to the strategic development of the school, while continuing to model outstanding classroom practice.

Due to the leadership responsibilities of the role, this is a full-time position only. On this occasion, we are unable to consider applications from candidates seeking part-time or flexible working arrangements.

Key responsibilities include:

- Supporting the leadership of teaching and learning across the school
- Acting as a Designated Safeguarding Lead
- Leading areas of school improvement, including curriculum and assessment
- Promoting high standards of achievement, behaviour and wellbeing
- Undertaking a class teaching commitment
- Leading curriculum subjects and supporting subject leaders
- Working closely with the SENCo to ensure inclusive practice for all pupils

The successful candidate will be an excellent classroom practitioner with leadership experience or clear leadership potential, committed to achieving the very best outcomes for every child. They will be positive, reflective and professional, able to build strong relationships with staff, pupils, parents and governors, and will share our Christian values of inclusion, respect and aspiration. We offer a warm, supportive and collaborative school community, alongside strong opportunities for leadership growth.

For more information on the position, please contact:

Tina Sewell-Hatch, School Business Manager

Tel: **01628 523766** Email: office@holyltrinitysch.co.uk

For an application form, please visit the school website:

Website: www.holyltrinitysch.co.uk

Closing date for applicants: 3rd June 2026

We are committed to safeguarding and promoting the welfare of children as our number one priority and we expect all staff to share this commitment. The successful candidate will be required to apply for an enhanced Disclosure and Barring Service (DBS) check. Visits to the school are warmly encouraged.

Search Online

Visit our **online jobs directory** to browse all current listings...



Are You An Amazing Teacher?

At Marie Redmond Tuition, we are recruiting experienced Primary Teachers to teach Year 4 and Year 5 11+ courses in small group tuition.

Due to expansion, starting September 2026:
Aylesbury: Saturdays 9.30am - 3.30pm
Bushey: Sundays 9.30 - 11.45am
Winnersh: Sundays 9.30am - 3.30pm

We Offer

- Competitive pay – from £250 per full day.
- Pre-planned lessons and all materials provided.
- A supportive and professional setting.
- Small class sizes with motivated students.
- Weekend and weekday opportunities.

We're Looking For

- Qualified Primary Teachers (QTS).
- A patient, supportive and kind approach.
- Availability during term-time (optional holiday weeks available).



Marie
Redmond
Tuition
ESTABLISHED 2012

Interested? Email marie@marieredmond.co.uk with your CV to arrange a friendly chat with Marie.
Enhanced DBS and references will be required.

OUTSTANDING RESOURCES...

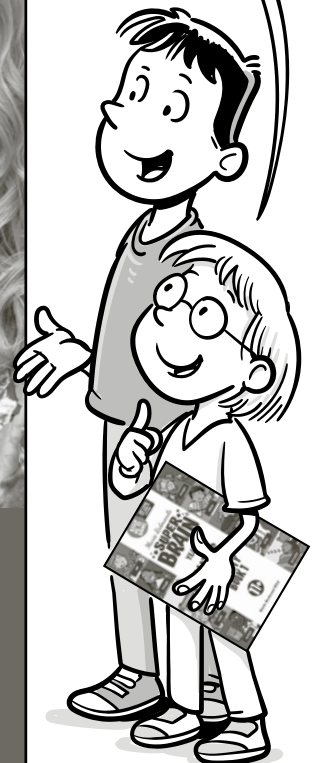
LESS ADMIN, MORE TIME FOR TEACHING.

AND ALL MATERIALS AND LESSON PLANS PROVIDED FOR YOU.



AVERAGE EIGHT STUDENTS, NEVER MORE THAN TEN IN A CLASS.

YOU'LL LOVE BEING PART OF THE TEAM.



NEW JOB ALERTS TAILORED TO YOU

Get notified when new jobs relevant to you become available.

Visit our website to create your custom job alert!

schoolvacancies.co.uk/job-alerts



COOKHAM RISE PRIMARY SCHOOL

KS2 Classroom Teacher

Pay Scale: Salary in accordance with experience & RBWM salary scales
Full time • Start Date: 1 September 2026

We are looking for an enthusiastic and dedicated Class Teacher to join our friendly and supportive team. This full-time role would be suitable for a practitioner who is passionate about delivering high-quality teaching and learning within KS2.

Applications from newly qualified teachers are welcome.

At Cookham Rise, we want every child to shine. The school is set in a lovely village and is a well-established part of a thriving local community. Cookham Rise is a happy and vibrant place to work, and we encourage you to visit us to see if it is the right place for you.

Please contact the school for more information and an application pack. Packs also available to download online at:

www.cookhamriseprimary.org/job-vacancies/

Applications considered on receipt.

Interviews will be organised to suit the candidate.

RBWM has a responsibility for, and is committed to safeguarding and promoting the welfare of children and young people and for ensuring that they are protected from harm. This post is subject to an enhanced DBS check.

Cookham Rise Primary School

High Road, Cookham, Berks SL6 9JF

Tel: 01628 520961

Email: office@cookhamrise.org

www.cookhamriseprimary.org



THE ROYAL BOROUGH OF WINDSOR & MAIDENHEAD



Seaford Road, Wokingham RG40 2EJ

CLASS TEACHER REQUIRED FOR SEPTEMBER 2026

FULL TIME OR PART TIME FIXED TERM FOR 1 YEAR

We are looking for a creative and committed teacher to join our highly ambitious and forward-thinking teaching team in September 2026.

We are looking for a teacher who is:

- Passionate about the development of our children
- Committed to high professional standards
- An enthusiastic and inspirational class teacher
- Have teaching experience within Key Stage 2

We can offer:

- A warm welcome into a supportive team
- A commitment to your professional development
- Opportunity for core subject leadership
- Children who are keen to learn and love their school
- A supportive network of parents and local advisors
- Energetic and motivational leadership team who will embrace your ideas and value your contribution

Please contact Kirsten Rack-Cooper via operations@westende.wokingham.sch.uk if you wish to visit the school or apply for the position.

Closing date: Friday 12th June

Interviews: w/c 15th June

Westende Junior School is committed to safeguarding and promoting the welfare of children and expects all staff and volunteers to share this commitment. This post is subject to an enhanced DBS check for the successful candidate.



Charity No. 1070083

One-to-One Club – Dyslexic Support

Looking for a Qualified SPLD/ Dyslexia Tutor - level 5 or 7

Based in Maidenhead – To start in September 2026
One-to-One Club (Saturday Morning - Term-time only)
Hours: Saturday – 8.45am to 1pm

The DAWMSB (Dyslexia Association of Windsor, Maidenhead, Slough and Maidenhead) arranges one-to-one tutoring for dyslexic children in the local area. These sessions are tailored by the tutor to the individual needs of each child. The sessions are offered at a competitive rate of £35.00 per session for 45 minutes (5 sessions each Saturday). The children attend Saturday sessions with a fully qualified dyslexia tutor to build literacy skills and confidence.

The club was founded over 35 years ago and is based at Oldfield School in Maidenhead, where it continues to be run by a committee of volunteers. The club organises learning for around 40 children each Saturday.

If interested we'd love to hear from you, please email your CV to:
1tooneclub@gmail.com

ADVERTISE NOW Simple Process, Low Cost.

Emailed weekly in term time to **6,000+ subscribers** and listed on our **online jobs directory**, Greensheets gives you a direct line to educators and active job seekers. Your go-to platform for teaching and education jobs in central southern England.





Emmbrook Junior School

Emmbrook Road, Wokingham RG41 1JR

Nurture, Grow, Thrive



Class teacher (0.6 FTE)

Maternity Leave Cover to start September 2026
Main Pay Scale

Emmbrook Junior School is a friendly, inclusive, and forward-thinking school committed to providing high-quality education and a nurturing environment for all our pupils. We are seeking an enthusiastic and dedicated Class Teacher to join our team to cover a period of maternity leave (one year).

We are looking for someone who:

- Is a qualified teacher (QTS) with a passion for primary education.
- Is adaptable, motivated, and committed to achieving the best outcomes for all pupils.
- Has excellent communication and interpersonal skills.
- Enjoys being part of a caring, dynamic, and collaborative team.

We can offer you:

- Happy, enthusiastic children who love to learn.
- Supportive colleagues and leadership team.
- Opportunities for professional development.
- A welcoming school community with strong values and a positive ethos.

Visits to the school are warmly encouraged – we'd love to show you what makes Emmbrook Junior a special place to work. We welcome applicants from under-represented groups including ethnicity, gender, transgender, age, disability, sexual orientation or religion.

Emmbrook Junior School is committed to safeguarding and promoting the welfare of children and expects all staff and volunteers to share this commitment. The successful candidate will be subject to an enhanced DBS check and satisfactory references.

Closing date for applications is 5th June 2026.
Interviews 10th June 2026.

For an application pack or to arrange a visit to the school please contact
Claire Freeman, Operations Manager
(admin@emmbrookjun.wokingham.sch.uk)



Emmbrook Junior School is an academy and part of The Circle Trust, a charitable company limited by guarantee registered in England and Wales, company number 11031096, registered at The Circle Trust, The Oval Offices, c/o St Crispin's School, London Road, Wokingham, Berkshire, RG40 1SS. General Enquiries: 0118 3381961 contact@thecircletrust.co.uk



Holy Trinity C of E Primary School

School Lane, Cookham, Berkshire SL6 9QJ

CLASS TEACHER – PART TIME

**Salary in accordance with experience
& RBWM salary scales**

Holy Trinity C of E Primary School is a welcoming, nurturing and inclusive school where children are encouraged to thrive academically, socially and emotionally. Set in the heart of the beautiful village of Cookham, our school benefits from a wonderful learning environment, extensive outdoor space and a dedicated and supportive team.

The Headteacher and Governors are seeking to appoint an enthusiastic and dedicated Class Teacher to join our friendly and supportive team. This is a part-time role and would be suitable for a practitioner who is passionate about delivering high-quality teaching and learning within EYFS, KS1 or KS2. Applications from newly qualified teachers are welcome.

The successful candidate will:

- Be an excellent classroom practitioner with high expectations for all pupils
- Plan and deliver engaging and inclusive learning experiences
- Work effectively as part of a collaborative and supportive team
- Communicate positively with pupils, colleagues and families

In return, we offer happy, motivated and well-behaved children, a warm, supportive and welcoming team, strong leadership with a clear shared vision and a beautiful school setting with excellent opportunities for outdoor learning.

For more information on the position, please contact:
Tina Sewell-Hatch, School Business Manager
Tel: **01628 523766** Email: office@holyltrinitysch.co.uk

For an application form, please visit the school website:
Website: www.holytrinitysch.co.uk

Closing date for applicants: 3rd June 2026

We are committed to safeguarding and promoting the welfare of children as our number one priority and we expect all staff to share this commitment. The successful candidate will be required to apply for an enhanced Disclosure and Barring Service (DBS) check. Visits to the school are warmly encouraged.



FIXED TERM MATERNITY COVER CLASS TEACHER

Required September 2026 to July 2027

Full time, MPS/UPS, ECT contracts available from July

St. Michael's Primary School is a warm and welcoming school situated in the heart of the Tilehurst community.

We are seeking to appoint an inspirational and enthusiastic teachers to help continue our journey to raise attainment and progress.

What we can offer:

- A welcoming and caring ethos
- A great staff well-being package, including a paid wellbeing day, off-site PPA, TOIL accumulation for extra-curricular activities/residential and much more.
- An experience and supportive team of staff and Governors
- Excellent teaching resources and working environment
- Opportunities for professional development and mentoring
- A track record of nurturing and growing talent
- A welcoming and inclusive school community
- Pupils who are confident and enjoy coming to school

We are looking for someone who:

- A Passionate and inclusive teacher with high expectations for all learners
- Has high expectations of achievement and behaviour
- Is able to play a positive and active role in our dedicated team
- A strong communicator able to build relationships with pupils, parents and colleagues
- Is able to create a stimulating learning environment
- Has strong ambition to make a difference to make a difference to pupils
- Is adaptable and embracing the ever changing school environment

Visits to the school are warmly welcomed. To arrange a visit, or if you require any further information, please contact us on 0118 9015550 or contact us by emailing; Businessmanager@stmichaels.reading.sch.uk

Closing date 7th June, Interviews Thursday 11th June however Applications will be considered upon receipt

Application forms and Job description can be found at <https://www.stmichaels.reading.sch.uk/vacancies/>

St. Michael's Primary School, Dee Road, Reading, RG30 4AS Tel: 0118 901 5550 <https://www.stmichaels.reading.sch.uk/>

We shall ensure fairness and equal opportunities throughout our workforce and in service delivery. We welcome applications from suitably skilled candidates regardless of ethnicity, gender, disability, sexuality, religion or age. This school is committed to safeguarding and promoting the welfare of children and young people, and expects all staff and volunteers to share this commitment. This role will require an Enhanced DBS check.

CHEAPSIDE CE PRIMARY SCHOOL

Class Teacher



Dates: Required for September 2026

Contract type: Full time position

MPS and ECT are welcome

Cheapside is a popular school in a village environment with strong links with the church and the community. We pride ourselves on offering exciting and stimulating opportunities which allow our children to thrive and achieve their best.

We wish to appoint a teacher, with energy and vision, to complement our staff team.

The successful candidate will:

- Offer enriching and inspiring learning opportunities for our children
- Have high expectations of children's achievements and behaviour
- Have excellent interpersonal and communication skills
- Demonstrate excellent classroom skills
- Maintain the Christian ethos of the school
- Work with colleagues, governors and parents with sensitivity and a good sense of humour
- Be enthusiastic and highly motivated, working as part of a strong team.

We can offer:

- A dedicated, enthusiastic and committed team of staff and governors
- A welcoming and supportive atmosphere
- Friendly and caring children who are keen to learn
- Excellent professional development
- A school that is actively involved in its community
- Excellent resources and an attractive environment.

Visits to the school and to meet the staff and children are welcomed and encouraged. Please telephone the School Office on **01344 621112** or email **school.office@cheapsideschool.org.uk** for an appointment and to request an application pack.

Closing date: 30th June 2026, although applications will be considered on receipt. Therefore, an early application is recommended.

Please send your completed application form to the school address or electronically to school.office@cheapsideschool.org.uk

Cheapside CE Primary School is committed to safeguarding and promoting the welfare of children and young people and expects all staff and volunteers to share this commitment. An enhanced DBS check will be sought from the successful candidate.

Cheapside CE Primary School
Watersplash Lane, Cheapside
Ascot SL5 7QJ
Email: school.office@cheapsideschool.org.uk
Website: www.cheapsideschool.org.uk



THE ROYAL BOROUGH OF WINDSOR & MAIDENHEAD



Aldermaston
CE Primary
School

Aldermaston C.E. Primary School

Wasing Lane, Aldermaston, Berkshire RG7 4LX
Tel: 0118 971 3362 Text: 0118 324 0216
e-mail: enquiries@aldermaston.w-berks.sch.uk
website: www.aldermaston.org.uk
Miss S Mosher - Headteacher



Class Teacher required

September 2026

(or October 2026 for the Right Candidate)

Full and Part Time Hours Considered

We are looking for an excellent teacher to join our warm, friendly and supportive team.

We would particularly love to hear from candidates who have a passion for leading **English** or **Maths** across the school. We are especially keen to hear from enthusiastic **EYFS** or **KS1 practitioners**, although applications from teachers with experience in any year group are warmly welcomed for the right candidate.

Our ideal candidate will be:

- Creative, enthusiastic and caring, with high expectations for all children both academically and socially
- Bring a calm, consistent and approachable manner, building strong, positive relationships with children, families and colleagues, while championing our inclusive ethos across the whole school community.
- Innovative and committed to further professional development
- Passionate about high-quality teaching and learning
- Sympathetic to the school's Christian foundation and ethos
- Supportive of our therapeutic approach within the classroom
- Eager to contribute to wider school development, including curriculum leadership opportunities in English or Maths

Our children are ready to learn and thrive within our beautiful setting and nurturing learning environment. We benefit from excellent facilities, fantastic community support and a strong commitment to staff wellbeing and development. We are dedicated to providing high-quality CPD opportunities and personalised professional growth.

Visits to the school are warmly welcomed. For more details and an application form, please call or email using the contact details above.

Closing date: Friday 5th June 2026

Interview date: Applications will be considered upon receipt and suitable interview dates arranged accordingly.


This School is committed to safeguarding children and promoting the welfare of children and young people and expects all staff and volunteers to share this commitment. We will ensure that all recruitment and selection practices reflect this commitment. All shortlisted candidates will be asked to complete a criminal records self-disclosure form and successful candidates will be subject to Disclosure and Barring Service (DBS) checks, along with other relevant employment checks.



Search Online

Visit our **online jobs directory** to browse all current listings...





DORNEY SCHOOL

Harcourt Close • Dorney Reach Maidenhead • Berkshire SL6 0DY
Tel: 01628 620871 • Email: office@dorneyschool.co.uk

Reception/KS1 Class Teacher

Teachers Main Scale plus London Fringe • Full time, permanent (part-time candidates will be considered) • Required for September 2026

The Senior Leadership Team and Governors of this successful, ambitious and creative primary school are looking to appoint an enthusiastic and dedicated class teacher to join our highly-skilled teaching team.

The Role

We are looking for an inspirational class teacher who is committed to ensuring that pupils leave our school with the best possible outcomes. Our teachers have a passion for delivering high quality learning experiences for all pupils and you will be supported by a positive, committed, generous and professional team of educators.

Class Teacher Key Responsibilities:

- Plan and adapt lessons to meet the needs of all pupils within the class.
- Support the school in providing an ambitious and creative curriculum for all our pupils.
- Play an active role in the future development of Dorney School.

Our unique and happy school offers you:

- A warm welcome; happy children and supportive staff.
- Children who are keen to learn and are highly aspirational.
- Engaged and active parents.
- Outstanding opportunities for professional development and career progression.
- A rare opportunity to join a team of highly committed, supportive, talented and innovative staff.

Please visit the school website for further information and an application form together with the privacy notice: www.dorneyschool.co.uk

We recommend visits to the school. If you would like a visit, please contact the school office to arrange.

Alternatively, we are happy to discuss any questions you may have by phone. Please contact the school office on **01628 620871**.

Application forms should be emailed to: office@dorneyschool.co.uk

Closing date: Friday 19 June 2026.

Interviews: To be confirmed.

We encourage applications from the right candidates regardless of age, disability, gender identity, sexual orientation, religion, belief or race.

As part of the Beeches Learning Development Trust, Dorney School is committed to safeguarding & promoting the welfare of its pupils & staff & expects all staff & volunteers to share this commitment. Successful candidates will be required to undertake an enhanced Disclosure & Barring Service (DBS) check.

www.dorneyschool.co.uk

NEW JOB ALERTS TAILORED TO YOU

Get notified when new jobs relevant to you become available.

Visit our website to create your custom job alert!

schoolvacancies.co.uk/job-alerts





Farnborough College
of Technology

INITIAL TEACHER TRAINING LECTURERS IN SECONDARY EDUCATION, 11-16 YEARS

REQ001924

**(Part-time with flexible hours across the academic year, permanent and Maternity cover roles available.
This is a fully onsite role based at Farnborough College of Technology)**

University Centre Farnborough is seeking lecturers to support post-graduate trainee teachers and their school-based mentors as they progress through their Initial Teacher Training year, leading to Qualified Teacher Status.

Ideally, candidates will be experienced and knowledgeable Secondary school teachers (11-16). We seek those who have had previous experience of mentoring trainee teachers, and who might have run Initial Teacher Training programmes in their own schools. **We currently offer the following subjects: Biology, English, Physics, Mathematics and Geography so experience of delivering these subject areas would be beneficial but not compulsory.**

These exciting roles would suit dynamic, experienced and innovative Secondary School subject specialists and/or subject leaders in English or Science who want to be at the forefront of growing the next generation of teachers. Ideally, potential candidates will be seeking either a part-time role possibly downsizing their existing teaching role with flexible working hours across the academic year. Alternatively, a secondment from their current place of work would be considered.

Farnborough College of Technology is an Equal Opportunities Employer.

This is a superb opportunity for a first-class applicant to teach in a highly respected and top-performing college. In turn we can offer you interesting and varied work with an excellent benefits package.

Benefits include: Teachers Pension, 40 days holiday, onsite gym, Employee Assistance Programme including Savings Centre offering retail discounts, Refectory and free on-site parking.

Interviews will take place shortly after the published closing date or when a suitable number of appropriate applications have been received, so early submissions are encouraged. Suitable candidates may be interviewed before the closing date and we reserve the right to withdraw the position if an early appointment is made.

Please note we are not accepting speculative applications from agencies.

For more information and to apply: <https://tinyurl.com/mv5yj2mc>

Closing date: 30 June 2026

Safeguarding for Employees - The College is committed to safeguarding and promoting the welfare of young people and vulnerable adults and expects all staff to share this commitment.

Positions within the College will involve contact with young people and vulnerable adults. Consequently, post-holders will be obliged to demonstrate and maintain their suitability to work with young people and vulnerable adults. This will include a requirement to undertake an enhanced DBS (Disclosure and Barring Service) check, in addition to referencing and qualification checks.

Disclosure and Barring Service - Farnborough College of Technology complies fully with the Disclosure and Barring Service (DBS) Code of Practice regarding the correct handling, storage, retention and disposal of Disclosures and Disclosure information, and undertakes not to discriminate unfairly against any subject of a disclosure on the basis of a conviction or other information revealed.

Since the post for which you are applying may involve unsupervised access to children and vulnerable adults, it will be exempt from the provisions of the Rehabilitation of Offenders Act 1974 (Exemptions Amendment Order 1986) please refer to the DBS website for further information.

Candidates who are offered an interview for such posts will be required to disclose details, cautions (including final warnings or reprimands), or convictions which are not "protected" as defined by the Exceptions Order 1975 (2013 and 2020), or any other matters that may be relevant to their suitability to work for the College. The College will regard any failure to disclose your criminal record as a breach of trust. It is College Policy that all candidates will be subject to a Disclosure check if offered the post for which the application has been made. Please note that the College is unable to consider an application further if the candidate declines to complete the Disclosure form.

NEW JOB ALERTS TAILORED TO YOU

Get notified
when new jobs
relevant to you become
available. Visit our website
to create your custom
job alert!



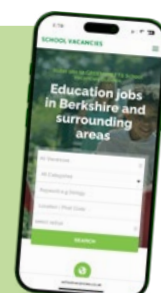
ADVERTISE NOW Simple Process, Low Cost.

Your go-to platform for teaching and education
jobs in central southern England.

Emailed weekly in term time to **6000+ subscribers** and listed on our **online jobs directory**, Greensheets gives you a direct line to educators and active job seekers.

 **6,000+**
SUBSCRIBERS

 **28 YEARS**
OPERATING





Kingston Road, Camberley, Surrey GU15 4AE | www.collingwoodcollege.com

At Collingwood College, you'll be working alongside a passionate team, and will have the ability to help shape teaching and learning standards and make a real difference. You will have opportunities for professional development and growth.

We are recruiting for the following roles:

TEACHER OF MATHS

**Required from September 2026
MPS**

Are you an innovative and committed Teacher of Maths seeking a new opportunity? If so, you could be part of our team.

You'll be delivering core aspects of the mathematics curriculum, leading and implementing outstanding teaching practices to instil key knowledge within learners and using assessment and feedback to sustain and raise achievement.

The right candidate will have:

- Qualified Teacher Status or equivalent qualification (Applications from ECTs welcome)
- Relevant specialist qualifications and experience (e.g BSc in Mathematics or related degree)
- Ability to deliver high-quality Mathematics lessons covering a range of modules and concepts
- A good understanding of curriculum and assessment requirements for Mathematics
- Enthusiasm and commitment to delivering high-quality teaching and learning to ensure all learners progress and achieve to a high standard in preparation for examinations

Closing date: 20 June 2026

TEACHER OF ENGLISH

**Required from September 2026
MPS**

Are you an innovative and committed Teacher of English seeking a new opportunity? If so, you could be part of our team.

You'll be delivering core aspects of the English curriculum, leading and implementing outstanding teaching practices to instil key knowledge within learners and using assessment and feedback to sustain and raise achievement.

The right candidate will have:

- Qualified Teacher Status or equivalent qualification
- Relevant specialist qualifications and subject experience (e.g BA Hons. degree in English)
- Understanding of curriculum requirements for English
- Evidence of commitment to continuing professional development
- Understanding of how to implement assessment methods for differentiated learning strategies

Closing date: 20 June 2026

HEAD OF FILM AND MEDIA STUDIES

**(TLR 2.3 £8,609)
Required from September 2026
MPS/UPS**

We are seeking an enthusiastic and inspiring Head of Film and Media Studies to lead this successful department.

You will be a strong classroom practitioner with excellent subject knowledge, leadership potential and the ability to motivate and inspire students. Applications are welcome from middle leaders and ambitious teachers ready to progress.

Early applications are encouraged. We may appoint before the closing date.

Closing date: 27 June 2026

To apply for any of these roles please visit: <https://tinyurl.com/2caa9zkr>

Safeguarding Collingwood College is committed to safeguarding and promoting the welfare of children and young people and expects all staff and volunteers to share this commitment. All appointments are subject to enhanced DBS clearance and satisfactory pre-employment checks.

Addington School, Woodlands Avenue, Woodley, Reading, RG5 3EU
Addington Early Years Centre, 5 Church Road, Farley Hill, RG7 1UB



Addington School

Addington School is part of the Ascendancy Partnership Trust, a multi-academy trust with deep community roots across the Berkshire area composed of a family of SEN schools all specialising in learning difficulties. We are a large all-age Outstanding Special School on the edge of Reading in Woodley and we have an Early Years Centre located in Farley Hill.

We have the following opportunity available:

Deputy Headteacher

Required September 2026 or January 2027

L22 - L28 £86,803 to £100,540 per annum

You will be:

- Passionate about outcomes for pupils with complex learning difficulties and experienced in the development of curriculum and assessment for students with learning difficulties.
- An experienced school leader with a proven track record of sharing SEND expertise.
- A leader who is energised by change but also skilled in leading, embedding and sustaining change that makes a difference to our pupils.
- Highly organised and efficient whilst able to inspire and enthuse staff, students and the community.
- A leader driven by core values that resonate with our school's values and strategic direction.
- A professional with drive, energy and determination who is approachable and a collaborative team player.

We will give you:

- The opportunity to join an experienced leadership team of an Outstanding school with a trust central team, with strong SEND knowledge and experience.
- An incredibly strong, talented and committed staff team.
- A delightful student community.
- Strong support from the Headteachers, Leadership Team, Governing Body and Trust.
- An environment where innovation, forward thinking and staff development for pupils with SEND is at the heart of what we do.

For further details and to apply, please visit:

<https://addington.wokingham.sch.uk/>

To apply, please complete an application form and email it to:

personnel@addington.wokingham.sch.uk

If you would like to be part of the Addington Community and want to know more, please contact **Lynda Wood** or **David Maycock**, Co-Headteachers for an informal discussion on **0118 966 9073**.

We welcome applications from all sections of the community.

Closing date for applications: Sunday 7 June 2026

Interviews: Thursday 18 and Friday 19 June 2026

ASCENDANCY PARTNERSHIP TRUST - STRONGER AND BETTER TOGETHER

Addington School is committed to safeguarding young people and to promoting the welfare of children. Applicants must be willing to undergo child protection screening and safer recruitment checks appropriate to the post, including checks with past employers and DBS. This position is exempt from the provisions of the Rehabilitation of Offenders Act 1974.



Prior's Court

Transforming the future for young people with complex autism

Hermitage, Thatcham, Berkshire RG18 9NU

IT LEARNING LEAD

As a Computing Teacher – Learning Lead, you will deliver ambitious programmes of learning that uniquely support and challenge each young person to develop key skills to enable young people to live healthy, happy, independent lives after leaving Prior's Court.

You will manage assessment, timetabling, planning and development of individual learning plans, and guide learning to ensure students achieve their individual "I Can" statements and develop their Learning Journeys within relevant Areas of Learning. You will also ensure the long-term and medium-term plans for the identified Area of Learning / learning programme are relevant and up to date.

You will continually improve outcomes through coaching and mentoring of staff to ensure excellent teaching and learning practices.

You will be responsible for ensuring the progress of each young person in your cohort and area or programme of learning.

Please apply through the link below:

<https://www.priorscourt.org.uk/pages/category/pi-vacancies>



Prior's Court

Transforming the future for young people with complex autism

Hermitage, Thatcham, Berkshire RG18 9NU

SEN TEACHER

Are you passionate about transforming the lives of autistic young people with complex needs? Do you thrive in a supportive, collaborative environment where every day brings the opportunity to make a meaningful impact? Prior's Court is looking for a dedicated Teacher to join our specialist education team and help shape brighter futures.

As a Teacher at Prior's Court, you will deliver high-quality, personalised learning programmes that enable young people to grow, develop, and achieve meaningful progress. Working closely with the Learning Lead and a multi-disciplinary team, you will plan, deliver, and evidence learning across relevant Areas of Learning. You will also act as a tutor for a small group of young people, supporting their holistic development in partnership with their residential teams.

This is a role where creativity, compassion, and resilience come together — and where your work genuinely changes lives.

Please apply through the link below:

<https://www.priorscourt.org.uk/pages/category/pi-vacancies>

NEW JOB ALERTS TAILORED TO YOU

Get notified when new jobs relevant to you become available.

Visit our website to create your custom job alert!

schoolvacancies.co.uk/job-alerts





Kingston Road, Camberley, Surrey GU15 4AE | www.collingwoodcollege.com

CHIEF FINANCIAL AND OPERATING OFFICER

Hours: 36 hours per week, all year round

Salary: Circa £82,000 DOE

Collingwood College is seeking a strategic and dynamic Chief Financial & Operations Officer to join our Senior Leadership Team to help drive excellence.

This is an exciting opportunity to lead all non-teaching functions across a large, high-performing secondary school of over 1700 students.

Key Responsibilities

- Lead finance, HR, IT, estates, and administration
- Deliver long-term financial strategy and ensure robust governance
- Drive income generation and operational efficiency
- Oversee major site development and infrastructure projects

About You

- Proven senior leadership experience in financial management
- Strong strategic and change leadership
- Excellent communication and decision-making
- Experience leading multi-disciplinary teams
- Education sector experience desirable

We offer

- Circa £82,000 salary
- Local Government Pension Scheme
- 26–30 days annual leave + bank holidays
- Healthcare cash plan & staff benefits

Early applications are encouraged. We may appoint before the closing date.

Closing date: 14 June 2026

COVER SUPERVISOR

Hours: 30.5 hours, Term Time only

Salary: Starting from £19,628 (Actual)
(FTE £26,929 to £29,731)

We currently have a new opportunity for a dynamic and flexible Cover Supervisor to support our staff and students by delivering lessons and supervision.

Job overview

You'll be an expert in deploying classroom management skills, enabling students to achieve their lesson objectives whilst offering appropriate support where needed and helping to assist the wider faculty when teaching staff are otherwise engaged.

The right candidate will have:

- Experience of working with students in an educational or service environment
- Minimum of 3 GCSEs at grade C or above (including Maths and English)
- Solid communication skills and the ability to successfully manage classroom behaviour and focus
- Ability to prioritise and plan workload, delivering set lesson content effectively and efficiently and identifying opportunities for further support where appropriate.

Why Collingwood College?

You'll make a key difference in student's progression with the ability to experience a leading role in the classroom, working as part of a wider team, with access to further developmental opportunities available.

Early applications are encouraged. We may appoint before the closing date.

Closing date: 27 June 2026

To apply for either of these roles please visit: <https://tinyurl.com/2caa9zkr>

Safeguarding Statement: Collingwood College is committed to safeguarding and promoting the welfare of children, young people and vulnerable adults and expects all staff and volunteers to share this commitment.



Budges Gardens, Wokingham, Berkshire RG40 1PX
Tel: 0118 334 1510 | admin@foundry.wokingham.sch.uk | www.foundry.wokingham.sch.uk

REFERRAL, ADMISSIONS & HOME TUITION CO-ORDINATOR

SALARY RANGE: GRADE 5 (SCP 12-17)

Full time or Part time

Actual Full Time Salary (£24,708 - £26,803)

Foundry College is more than a school; it is a sanctuary for approximately 60 young people with complex Social, Emotional, and Mental Health (SEMH) needs. We are looking for a Referrals & Admissions and Home Tutor Co-ordinator who is ready to be the "face and voice" of our provision.

This is a multi-faceted role designed for someone who is as compassionate as they are organised. You will manage the vital gateway to our provision, ensuring that every young person's transition into our care—whether in-person or through our home tuition program—is seamless, supportive, and efficient.

The ideal candidates for Home Tuition Co-ordination will:

- Coordinate the scheduling and allocation of tutors for pupils receiving education at home.
- Act as the central link between home tutors, families, and the college's pastoral team to ensure no child falls through the gaps.
- Maintain accurate records of home tuition hours and engagement levels, ensuring Foundry College has a 360-degree view of the pupil's journey.

Core Admissions & Referrals:

- Lead the administration of pupil referrals, ensuring all documentation is meticulous from the first point of contact to the pupil's first day.
- Attend and minute admissions meetings, capturing key actions that directly impact a child's educational pathway.
- Provide a warm, non-judgmental, and professional welcome to families, external agencies, and visitors in a busy SEMH environment.
- Maintain and develop both electronic and manual records with an unwavering commitment to data protection and confidentiality.

In return, we can offer you:

- A bright, modern College with a creative approach to working with young people
- Excellent opportunities for professional development
- A friendly and supportive staff team, dedicated to improving pupil outcomes and life chances
- A Senior Leadership Team that encourages team working, innovation and the use of solution-based thinking

For further information about the role, please contact Louise Brookes on **0118 334 1510**.

To apply, please visit our website
<https://www.foundry.wokingham.sch.uk/support-staff-vacancies/>
where you will find the job description and application form.

Completed Application Forms should be emailed to recruitment@foundry.wokingham.sch.uk

Applications will be considered on receipt.

Foundry College is fully committed to safeguarding and promoting the welfare of children and young people. This position requires an enhanced DBS disclosure CVs will not be accepted

Search Online

Visit our **online jobs directory** to browse all current listings...





Yattendon C of E Primary School

A small school with a big vision

Yattendon, Thatcham, Berkshire, RG18 0UR | www.yattendonschool.co.uk

Administration Officer

Required from September 2026

32.5 hours per week * Mon-Fri 08.30-15.30 * term time only

Grade D £25,583 – £27,254 (Full Time Equivalent)

Actual salary £19,048 - £20,293

This is a varied and busy role that sits at the heart of our school's day-to-day operations. You will be the first point of contact for parents, visitors and staff, requiring excellent communication and interpersonal skills. You will manage a range of administrative duties, help ensure the smooth running of the school office and support the whole school team.

We are looking for someone who:

- is an efficient administrator with good organisational and communication skills
- is able to support staff and the Headteacher with day to day organisation of the school
- is able to prioritise and work to an agreed schedule
- is aware of the confidentiality required in this role
- has strong literacy and numeracy skills and is IT literate
- is polite and tactful in dealing with people
- works effectively as part of a team.

We are a small and friendly team and are proud of our Yattendon family which includes supportive parents, staff and governors and children that are passionate about learning. Visits are strongly encouraged.

Job Description and Application form available on the school website.

Contact finance@yattendon.w-berks.sch.uk to arrange an informal visit.

Closing date: Monday 8th June at 12noon. Interviews: w/c Monday 8th June.

We reserve the right to interview on receipt of suitable applications. Please note that applications will not be considered without a completed application form.

Yattendon Church of England (Aided) Primary School is committed to safeguarding & promoting the welfare of children & young people and expects all its staff & volunteers to share this commitment. We will ensure that all our recruitment and selection practices reflect this commitment. All shortlisted candidates will be asked to complete a criminal records self-disclosure form and successful candidates will be offered employment subject to Disclosure and Barring Service checks along with other relevant employment checks.



READING BLUE COAT

A Co-Educational Independent Day School for Students aged 11-18

HR ADMINISTRATOR

Full-time, all year round

We are looking for an excellent administrator who has an interest in HR and wants to make a difference to join our HR team.

In this role, you will provide a professional, efficient and effective HR and Recruitment administration service across the School in accordance with agreed policies and procedures, ensuring compliance with all relevant legislation; maintaining confidentiality and high professional standards at all times.

This is a full-time role working 37.5 hours per week from 08.30 to 16.30.

About You

The ideal candidate will have proven experience of working in an administrative role (HR or recruitment experience is an advantage but not necessary). You will have discretion, tact and the ability to maintain confidentiality at all times. You will be detail-oriented and able to work in an organised and methodical way and adjust your approach to a variety of different people and situations.

Our School

Founded in 1646, Reading Blue Coat is a leading independent day school of circa 800 pupils from ages 11 to 18. The School is located on a beautiful 46-acre campus in the village of Sonning, just outside Reading.

The School employs more than 200 staff, of whom 50% are academic staff, and provides a stimulating, friendly and supportive atmosphere in which each pupil can realise his or her full intellectual, physical, and creative potential.

What we offer

Reading Blue Coat offers an exceptional working environment and an attractive rewards package, including excellent benefits such as a pension scheme; free meals; extensive staff discounts; life assurance, tax saving cycle to work and car leasing schemes; free sports and leisure facilities; Employee Assistance Programme; and a strong commitment to professional development.

Further details and an application form can be downloaded from our website: www.rbcs.org.uk/about/work-with-us/ or contact the HR department, Tel: **0118 933 5813** email: recruitment@rbcs.org.uk

Closing date: 09:00 on Monday 8 June 2026

Applications must be submitted to the email address above by application form (which can be found on our website) and accompanied by your covering letter.

Applicants must already be eligible to work in the UK.

The School is committed to safeguarding and promoting the welfare of children and young people and expects all staff and volunteers to share this commitment. Applicants must be willing to undergo checks with past employers and the Disclosure and Barring Service enhanced check.

Registered charity number 1087839 • No agencies, please www.rbcs.org.uk

ADVERTISE NOW

Simple Process, Low Cost.

Emailed weekly in term time to **6,000+ subscribers** and listed on our **online jobs directory**, Greensheets gives you a direct line to educators and active job seekers. Your go-to platform for teaching and education jobs in central southern England.





Primary and Secondary Pupil Referral Units within West Berkshire
Acceptance, Kindness, Responsibility, Perseverance, Aspiration

- Do you want to make a real difference?
- Do you want a good work-life balance?
- Do you want to build relationships with the young people you support?

Required 2nd September 2026

SITE CONTROLLER

Grade F

iCollege Alternative Education – Newbury,
Thatcham and Calcot

35 hours per week - All year round

We are looking for a reliable, practical and proactive Site Controller to join our friendly school team. This is a key role responsible for keeping our school site safe, secure, well maintained and ready for learning each day. Duties include site security, minor repairs, routine checks, health and safety tasks, contractor supervision and general upkeep of the buildings and grounds.

We are looking for someone who:

- Has experience in site management, caretaking or premises work
- Can carry out minor repairs and maintenance tasks
- Understands health and safety and site security
- Is organised, dependable and able to work independently
- Has good communication skills and a flexible approach
- Is committed to safeguarding and promoting the welfare of children

At iCollege Alternative Education, you will be part of a supportive team and play an important role in creating a safe, welcoming environment for pupils, staff and visitors.

Closing date: Friday 5th June 2026 @ Noon

Interviews to take place week commencing Monday 15th June 2026

For further information or an application pack please email recruitment@icollege.org.uk or phone Karen Hamilton 01635 48872

iCollege is committed to safeguarding children and promoting the welfare of children and young people and expects all staff and volunteers to share this commitment. We will ensure that all our recruitment and selection practices reflect this commitment. Successful candidates will be subject to Enhanced Disclosure and Barring Service (DBS) checks along with other relevant employment checks including overseas checks as necessary and online searches.



LVS Ascot

A Co-educational Day & Boarding School
for young people aged 4 - 19

Site Porter

LVS Ascot (Berkshire)

LVS Ascot is a high performing co-educational day and boarding school, with a reputation for all-round excellence.

We are recruiting for a Site Porter to work as part of our in-house portering team, the role will require the post holder to take a lead in work allocation, carrying out light security tasks such as unlocking/locking of gates and buildings, establishing strong lines of communication with various stakeholders to ensure the smooth operation of the various portering duties and dealing with any ad hoc requests from the school.

We are looking for a professional Site Porter with “hands on” attributes, to work as part of our portering team undertaking activities including site set ups, post and deliveries, event support, traffic management, and site lock up/unlock. The successful applicant will also coordinate the upkeep of the sites & vehicle fleet to ensure health and safety compliance as well as running team meetings & providing staff training. The successful applicant will have the ability to manage their own workload, be computer literate, strong awareness of HSE and a full clean driving licence.

Hours of work: Monday to Friday, two-week alternating rota (10am – 6pm & 6am – 2pm) 37.5 hours per week, 52 weeks per year.

The successful applicant will be required to undergo an Enhanced Disclosure and Barring Service check. So, join us and you will find a friendly and supportive team, we offer a competitive salary, full training, uniform, lunch, and refreshments whilst on duty.

Closing date for applications is 5th June 2026, interviews will be held soon after the closing date.

For a role description and to apply please visit the Working For Us section on www.lvs.ascot.sch.uk or contact recruitment@ltcharity.org.uk

Previous candidates need not to apply

LVS Ascot is a co-educational day and boarding school committed to safeguarding, Prevent Duty and promoting the welfare of children and young people ages 4 - 19

Registered Charity No. 230011

NEW JOB ALERTS TAILORED TO YOU

Get notified when new jobs relevant to you become available. Visit our website to create your custom job alert!



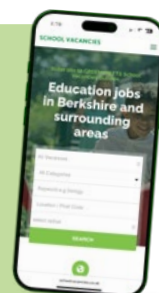
ADVERTISE NOW Simple Process, Low Cost.

Your go-to platform for teaching and education jobs in central southern England.

Emailed weekly in term time to **6000+ subscribers** and listed on our **online jobs directory**, Greensheets gives you a direct line to educators and active job seekers.

6,000+ SUBSCRIBERS

28 YEARS OPERATING





CHALVEY NURSERY SCHOOL
Ladbroke Road, Slough SL1 2SR
Email: bursar@chalveyec.slough.sch.uk
Phone: 01753 978660
www.chalveynurseryschool.co.uk

Early Years Practitioner: 37 hours per week

Required for September 2026

**Pay Range: Level 5, SCP 13-23 • Actual Salary
£25695.79 - £30443.46 • Permanent**

Our school motto is 'Sharing, Caring and Learning Together' and this is a wonderful description of our school. We understand the importance of every day in each child's life and believe that all children have the right to the best possible learning experiences during their time with us. We have supported multi generations of many families here at the nursery. The school continues to develop and has been part of the TLC Nursery Federation alongside Slough Centre Nursery School since 2012. Through this, we have been able to share expertise and good practice, further strengthening the nursery.

We are looking to recruit an enthusiastic and experienced Early Years Practitioner, who can work flexibly across our Nursery and put the needs of the children at the forefront.

Visits to the school are warmly welcomed and appointments should be made via the school office on **01753 978660**

Closing date: Wednesday 10th June 2026 | Interview date: Friday 12th June 2026

To request an application pack, please email: bursar@chalveyec.slough.sch.uk

We are committed to safeguarding and promoting the welfare of children, young people and vulnerable adults, and expect all staff and volunteers to share this commitment. This post is subject to an Enhanced DBS check.



ST PIRAN'S

Inspiring Confidence

The School is a vibrant, happy and successful co-educational preparatory school for boys and girls aged 2 to 11 years where every child is a valued member of the school community and we provide them with the support, encouragement and opportunities to tackle personal obstacles, achieve high standards and fulfil their true potential.

EARLY YEARS PRACTITIONER

£21,551 - £27,600 annually (actual)

Full time • Hours of Work 8.00 am - 4.30 pm

Monday to Friday, term-time only

If you are an inspirational EYFS practitioner and have the passion, initiative, creativity and determination to shape children's lives, we want to hear from you.

The successful candidate will hold a Level 3 or above in Child Development or equivalent qualification, and have proven experience in a similar role. We are looking for practitioners with knowledge and experience of working with two to five year olds, as well as a firm understanding of the Early Years Foundation Stage Curriculum.

In return, we can offer outstanding resources, on going CPD opportunities and a supportive working environment in a school that has a track record of excellence and a passion for the future.

Applications must be made via My New term
<https://mynewterm.com/jobs/110126/EDV-2026-SPS-40901>
Further details and information are available in the Candidate Information Pack on the School Website:
<https://www.stpirans.co.uk/contact-us/staff-vacancies>

Closing date: midnight, Sunday 7 June 2026

St Piran's is committed to safeguarding and promoting the welfare of children and young people and expects all staff to share this commitment. All successful applicants will be required to undergo child protection screening including checks with current and previous employers and the Disclosure & Barring checks.

Gringer Hill, Maidenhead, Berkshire SL6 7LZ

◆ 01628 594300 ◆ schooloffice@stpirans.co.uk ◆ www.stpirans.co.uk ◆
◆ IAPS Independent School ◆ Co-educational ◆ Day School ◆ 400+ Pupils ◆
St. Piran's is a registered Charity No. 309094

NEW JOB ALERTS TAILORED TO YOU

Get notified when new jobs relevant to you become available. Visit our website to create your custom job alert!



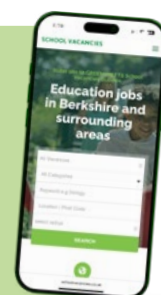
ADVERTISE NOW Simple Process, Low Cost.

Emailed weekly in term time to **6000+ subscribers** and listed on our **online jobs directory**, Greensheets gives you a direct line to educators and active job seekers.

6,000+
SUBSCRIBERS

28 YEARS
OPERATING

Your go-to platform for teaching and education jobs in central southern England.





SONNING CHURCH OF ENGLAND PRIMARY SCHOOL

Ligugé Way, Sonning, Berkshire RG4 6XF
 www.sonning.wokingham.sch.uk
 operations@sonning.wokingham.sch.uk
 Headteacher: Mr P Sherwood

WRAP AROUND CARE PLAY WORKER

Looking for a role with flexible hours where you can play alongside pupils and provide an enjoyable and stimulating environment?

Sonning CE Primary School has a fantastic reputation that is fully deserved. It is a result of high academic achievement combined with our caring and nurturing environment. At Sonning, we aim to equip our children with the skills they need to make positive choices in everything they do, enabling them to live out our vision of "building strong foundations for the years ahead".

Our Ofsted report (July 2025), in which we were graded as Outstanding in every area, described our school as "remarkable" – this is an opportunity to work in an incredibly supportive, dedicated and passionate team.

We are seeking a play worker to work in our wraparound care club.

Whether you are a student interested in work outside of college/university hours, you currently work in childcare but want additional hours or a fresh challenge, or you are looking to launch your career in childcare, we would love to hear from you.

Key Details:

- You will assist with the day-to-day activities of the club in providing a caring, secure environment, through individual attention and group activities within the framework of the school's policies and procedures.
- You will provide a high standard of physical, emotional, social and intellectual care for children in the setting.
- To ensure the health and safety of children during the sessions.
- Grade 2 SCP 3 FTE £24,796.00 (Actual salary example: £2,802.00 based on 5 hours a week, term time only)
- Part time (exact hours to be confirmed but shifts available Monday to Friday between 15:15 and 18:00)
- Positions available to start as soon as possible.

Additional information: Please be aware that salary arrangements for under 18s will be based on National Minimum Wage for 16-17 year olds at £8.00 per hour.

To apply:

Please apply via the link on our website (vacancies page):
www.sonning.wokingham.sch.uk/page/?title=Job+vacancies&pid=116

Closing date for applications: 07.07.2026

Applications will be processed on receipt

Who are we looking for?

The successful candidate will have the following:

- A clear passion for working with children and helping them succeed.
- An understanding of how to support pupils individually or in groups by planning effective sessions.
- High expectations for standards of behaviour.
- The ability to work collaboratively, and be a strong and supportive team player.
- Promote our ethos, vision and values.

In return, we offer:

- Polite, curious and enthusiastic children.
- A supportive and friendly staff team
- Strong relationships with families and the community
- Opportunities for training and professional development
- A welcoming village setting.

The Trust is committed to safeguarding and promoting the welfare of children and young people and expects all staff and volunteers to share this commitment. Applicants must be willing to undergo checks with past employers and the Disclosure and Barring Service enhanced criminal records check. No agencies please.

The Willink School

School Lane, Burghfield Common,
Reading, Berkshire RG7 3XJ
www.willinkschool.org.uk

**ASSISTANT LIBRARIAN**

Band C3-D9 £24,796 - £27,254 FTE (pro rata for 20 hours
£11,310 - £12,487) • 20 hours per week, term time only plus
five training days • Required September 2026

We are looking to appoint an Assistant Librarian. The successful applicant will work closely with the Library Manager with all aspects of running the school library, providing a welcoming, organised and safe learning environment for the whole school community.

As Assistant Librarian you will help develop student reading motivation and culture, use of information and digital literacy and encourage independent learning. You will deputise for the Library Manager and be the sole supervisor on a designated day of the week.

On occasion the role may require extra hours, but this will be by prior arrangement with the Library Manager; therefore, the successful applicant needs to have a flexible approach.

The Willink is a successful and oversubscribed school with a strong international ethos. As the preferred state school in our area, we attract learners beyond our catchment, including Hampshire, Reading and Wokingham. The school has over 1200 students on roll including 200 in the Sixth Form, and is situated in a pleasant semi-rural setting south west of Reading.

For further information and an application pack, please visit the school website or contact **Kim Paonessa**, at hr@willink.w-berks.sch.uk

For an informal conversation about the role, please contact **Rosie Davis**, the Library Manager at rdavis@willink.w-berks.sch.uk or call **0118 9832030**.

Closing date: Monday 8 June 2026

Interviews are likely to be Thursday 18 June 2026

Applications will be reviewed on receipt. Early application is advised as we hold the right to close the application process early if a suitable applicant applies and is appointed.

The school is committed to safeguarding and promoting the welfare of children and young people and expects all staff and volunteers to share this commitment. The successful applicants will be required to apply for an enhanced disclosure from the Disclosure and Barring Service (DBS). Further information can be found at www.homeoffice.gov.uk



Registered Charity Number 1208138

Are you committed to improving diversity and inclusion locally?

Join our growing team as an

Employment Coach

and make a difference to young people and adults with disabilities in West Berkshire & South Oxfordshire.

Salary Full Time £27,000 per annum rising to £27,500 after successful probation.

Permanent full time, minimum 30 hours considered.

We are looking for **2 Employment Coaches**.

These are community-based roles, one role working across West Berkshire and one role working in South Oxfordshire.

You will be supporting individuals with disabilities or disadvantages to identify their skills and support their journey into paid employment.

Key responsibilities:

- Work with adults and young people on a one-to-one basis in the community to identify their aspirations and unique skills and match those with local employers to ultimately secure paid work.
- Engage with clients and their circle of support.
- Create client development plans.
- When required, provide travel training.
- Liaise with employers to fill vacant positions and support their quest for a diverse workforce.

Profile

The successful candidate will need to have the following skills and experience:

- Excellent communication skills, energy and enthusiasm.
- Competency in using varied IT systems accurately.
- Good organisational skills with the ability to balance the needs of clients, employers and us!
- Resilient, pragmatic approach to dealing with people and occasionally challenging situations.
- Locally based with a full UK driving licence and daily access to a car is **essential**.
- A successful enhanced DBS would be required (paid for by us).
- Knowledge of disability or HR procedures is beneficial but not essential as training is provided.
- Most importantly a sense of humour, someone who share our values (<https://www.waysintowork.com/about>) and wants to make a real difference to someone's life.

Job Offer

- 25 days annual leave (plus bank holidays) pro rata for part-time.
- The opportunity to buy or sell annual leave.
- Company Pension.
- Training and development opportunities.
- Regular social and team events.

For further information visit <https://www.waysintowork.com/careers>

To apply submit your CV to info@waysintowork.com clearly highlighting the community location you are interested in. If you require any adjustments during the recruitment process, please let us know, and we will work with you to meet your needs.

Ways into work are committed to safeguarding all clients and staff. We adhere to all local and national policies aimed at promoting the welfare of children and vulnerable adults. Offer of employment is subject to a successful Disclosure and Barring Service check (DBS).

NEW JOB ALERTS TAILORED TO YOU

Get notified when new jobs relevant to you become available.

Visit our website to create your custom job alert!

schoolvacancies.co.uk/job-alerts





Registered Charity Number 1208138

Are you committed to improving diversity and inclusion for young people locally?

Join our growing team as a

Supported Internship Employment Coach

to make a difference to young people (16 – 25 years)
with EHCPs in Berkshire.

Salary Full Time is £27,000 per annum rising to £27,500
after successful probation.

Full or part time (30 hours) would be preferable, term
time working is also an option.

We deliver supported internships across Berkshire which enable young people with EHCP's to 'learn on the job' rather than in the traditional setting of the classroom.

Due to unprecedented demand for our **Supported Internship** programmes, we are looking for **2 Employment Coaches** to join our **passionate** team.

One role is based in **Theale** (8.15am start time) & one role is working in **Newbury and surrounding areas**.

Key responsibilities are:

- Coach young people in their supported internship place of work on a one-to-one basis.
- Liaise with the workplace employer, education providers and programme manager.
- Provide mentoring and coaching when needed to the intern's workplace line manager and work colleagues.
- Travel training to support interns to travel to their place of work.

The successful candidate will need to have the following skills and experience:

- Excellent communication skills, energy and enthusiasm.
- Competent to use varied IT systems accurately.
- Good organisational skills with the ability to balance the needs of clients, employers and us!
- Resilient and pragmatic approach to dealing with people and occasionally challenging situations.
- Locally based with a full UK driving licence and daily access to a car is **essential**.
- A successful enhanced DBS would be required (paid for by us).
- Knowledge of disability or HR procedures is beneficial but not essential as training is provided.
- Most importantly a sense of humour, someone who share our values (<https://www.waysintowork.com/about>) and wants to make a real difference to someone's life.

Job Offer

- 25 days annual leave (plus bank holidays) pro rata for part-time.
- The opportunity to buy or sell additional annual leave.
- Company Pension.
- Training and development opportunities.
- Regular social and team events.

For further information visit <https://www.waysintowork.com/careers>

To apply submit your CV to info@waysintowork.com clearly highlighting the role you are interested in. Please let us know if you require any adjustments during the recruitment process.

Ways into work are committed to safeguarding all clients and staff. We adhere to all local and national policies aimed at promoting the welfare of children and vulnerable adults.

NEW JOB ALERTS TAILORED TO YOU

Get notified when new jobs relevant to you become available.

Visit our website to create your **custom job alert!**

[schoolvacancies.co.uk/job-alerts](https://www.schoolvacancies.co.uk/job-alerts)





Assistant Support Worker

Bounce Back for Kids (BB4K) is a lifeline for children healing from the trauma of domestic abuse. We're looking for a new Assistant Support Worker to join our team – helping guide children/families on their recovery journey.

Location: Reading with hybrid flexible working. Role requires travel across Reading, West Berkshire, Wokingham, South Oxfordshire, Vale of the White Horse.

Contract: Permanent part-time – 22 hours/week, weekdays. Open to discussing working patterns that match your needs and our service delivery.

Salary range: £15,387-£16,447 pro-rata per annum (FTE range £25,878-£27,661 per annum)

The role:

Following training the Assistant Support Worker will support the service through groupwork, assessments and hold a small case load providing one-to-one support work.

The objective is to develop the necessary skills/knowledge to enable service users make positive changes in theirs/their children's lives, reducing the likelihood of further trauma.

About you:

You'll need personal, professional or academic experience of support work for people experiencing domestic abuse, an interest in/experience in supporting vulnerable children/families.

To apply, please visit our website www.pactcharity.org/careers/current-opportunities/

Closing: 09/06/2026 at 9am | Interviews are likely: 05/06/2026 and 19/06/2026

Early applications are encouraged as we may review and appoint earlier if a successful candidate is secured.



Budges Gardens, Wokingham, Berkshire RG40 1PX
Tel: 0118 334 1510 | admin@foundry.wokingham.sch.uk | www.foundry.wokingham.sch.uk

SEMH SPECIALIST KS3-KS4

SALARY RANGE: GRADE 7 (SCP 25-29)

Actual Salary (£31,556 - £34,592)

Permanent contract

Foundry College is a 'Good' Pupil Referral Unit in the heart of the community of Wokingham supporting the young people, schools and families in the borough as well as opening our doors to surrounding authorities. Our dedicated staff offer a range of educational, emotional and behaviour support, with bespoke packages for our students aged 5 - 16. The successful candidate will join us at an exciting time as we develop our services.

As Foundry College develops its outreach service, we are looking to recruit a SEMH Specialist, committed to making a difference to our young people in Wokingham.

The ideal candidates will:

- Have a passion for building strong relationships with young people through restorative working
- Thrive in a challenging environment
- Be resilient and approachable
- Be good communicators who are able to inspire and motivate pupils and staff, but who can also remain calm under pressure and have a sense of humour
- Be creative and have initiative, striving to bring out the best in pupils and staff
- Model strong professional behaviours, both in personal presentation and on paper

In return, we can offer you:

- A bright, modern College with a creative approach to working with young people
- Excellent opportunities for professional development
- A friendly and supportive staff team, dedicated to improving pupil outcomes and life chances
- A Senior Leadership Team that encourages team working, innovation and the use of solution-based thinking

For further information please contact Louise Brookes, Outreach Strategic Lead, on **0118 334 1510**.

To apply, please visit our website <https://www.foundry.wokingham.sch.uk/support-staff-vacancies/> where you will find the job description and application form.

Completed Application Forms should be emailed to recruitment@foundry.wokingham.sch.uk

Applications will be considered on receipt.

Foundry College is fully committed to safeguarding and promoting the welfare of children and young people. This position requires an enhanced DBS disclosure CVs will not be accepted.



READING BLUE COAT

A Co-Educational Independent Day School for Students aged 11-18

PASTORAL OFFICER

(Full-time, Term-time, plus)

We are looking for an engaging, pro-active and compassionate individual to join our pastoral team.

In this role, you will provide emotional, social, and practical support to students, ensuring their well-being, safety, and positive behaviour. You will act as a vital link between students, parents, teachers and external agencies to help children overcome barriers to learning, improve attendance and achieve their potential.

This is a full-time, term-time role working 40 hours per week from 08:00 to 16:30 with a 30-minute break for lunch. Five additional days are required to be worked during the School holidays with exact days to be mutually agreed.

About You

The ideal candidate will have experience of successfully working with young people on behaviour and welfare in secondary settings and demonstrated understanding of school safeguarding regulations and policies, mental health and student wellbeing. You will have an ability to engage young people clearly, warmly and consistently.

Our School

Founded in 1646, Reading Blue Coat is a leading independent day school of circa 800 pupils from ages 11 to 18. The School is located on a beautiful 46-acre campus in the village of Sonning, just outside Reading.

The School employs more than 200 staff, of whom 50% are academic staff, and provides a stimulating, friendly and supportive atmosphere in which each pupil can realise his or her full intellectual, physical, and creative potential.

What we offer

Reading Blue Coat offers an exceptional working environment and an attractive rewards package, including excellent benefits such as a pension scheme; free meals; extensive staff discounts; life assurance, tax saving cycle to work and car leasing schemes; free sports and leisure facilities; Employee Assistance Programme; and a strong commitment to professional development.

Further details and an application form can be downloaded from our website: www.rbc.org.uk/about/work-with-us or contact the HR department, Tel: 0118 933 5813 email: recruitment@rbc.org.uk

Closing date: 9am on Monday 8 June 2026

Applications must be submitted to the email address above by application form (which can be found on our website) and accompanied by your covering letter. Applicants must already be eligible to work in the UK.

The School is committed to safeguarding and promoting the welfare of children and young people and expects all staff and volunteers to share this commitment. Applicants must be willing to undergo checks with past employers and the Disclosure and Barring Service enhanced check. Registered charity number 1087839 • No agencies, please www.rbc.org.uk

Search Online

Visit our **online jobs directory** to browse all current listings...





Budges Gardens, Wokingham, Berkshire RG40 1PX
Tel: 0118 334 1510 | admin@foundry.wokingham.sch.uk | www.foundry.wokingham.sch.uk

NIA HLTA

SALARY RANGE: GRADE 6 (SCP 18-24)
Full time or Part time
Actual Full Time Salary (£27,247 - £30,596)

Foundry College is a 'Good' Pupil Referral Unit in the heart of the community of Wokingham supporting the young people, schools and families in the borough as well as opening our doors to surrounding authorities. Our dedicated staff offer a range of educational, emotional and behaviour support, with bespoke packages for our students aged 5 - 16. The successful candidate will join us at an exciting time as we continue to develop our services.

Foundry College are looking to recruit multiple HLTAs, to support Wokingham Borough pupils who require targeted individual or group intervention, who is committed to making a difference to our young people in Wokingham.

The ideal candidates for NIA HLTA will:

1. Nurture: Lead Therapeutic Practitioner

- Advanced Behavioural Support: Lead high-level interventions for pupils with significant emotional and behavioural difficulties, utilising "Therapeutic Thinking" to foster positive responses.
- Relationship Architect: Develop and oversee deep, professional relationships with pupils, acting as a senior role model.
- Safeguarding Advocacy: Maintain the highest standards of pupil welfare, ensuring all trauma-informed practices align with college safeguarding and equality policies.

2. Inspire: Educational Innovation

- Classroom Leadership: Autonomously plan and deliver ambitious learning activities, taking full lead of groups or classes to ensure continuity of high-quality education.
- Creative Engagement: Design bespoke strategies to re-motivate pupils who have faced previous educational barriers, sparking curiosity and a drive for life skills.
- Strategic Pupil Enrichment: Orchestrate and lead offsite educational activities, ensuring learning extends beyond the classroom into real-world environments.

3. Achieve: Driving Systemic Outcomes

- Collaborative Leadership: Act as a key link between teachers, families, and external multi-agency professionals to ensure a holistic approach to pupil achievement.
- Empowering Independence: Focus on equipping pupils with the essential literacy, social, and presentation skills required to reach their full potential and secure recognized qualifications.

In return, we can offer you:

- A bright, modern College with a creative approach to working with young people
- Excellent opportunities for professional development
- A friendly and supportive staff team, dedicated to improving pupil outcomes and life chances
- A Senior Leadership Team that encourages team working, innovation and the use of solution-based thinking

For further information about the outreach worker role, please contact Dionne Wyatt on **0118 334 1510**.

To apply, please visit our website:

<https://www.foundry.wokingham.sch.uk/support-staff-vacancies/> where you will find the job description and application form.

Completed Application Forms should be emailed to recruitment@foundry.wokingham.sch.uk

Applications will be considered on receipt.

Foundry College is fully committed to safeguarding and promoting the welfare of children and young people. This position requires an enhanced DBS disclosure CVs will not be accepted



Enjoy Achieving

THATCHAM PARK CE PRIMARY SCHOOL

Park Avenue, Thatcham, Berkshire RG18 4NP
Headteacher: Mrs Alison Webster
Tel: 01635 870950 | e-mail: office@thatchampark.w-berks.sch.uk
Website: www.thatchampark.w-berks.sch.uk

Our successful, friendly and inclusive school is looking to appoint an enthusiastic, qualified

Higher Level Teaching Assistant (HLTA)

30 hours per week (4 days), Term time and INSET days. Required September 2026
Salary Band F £28,142 – £32,061 pro rata

We are an open and caring leadership team, highly committed to supporting the professional development of all staff.

Are you passionate about primary education? Do you believe that every child deserves access to the highest standards of education?

Working across the Primary phase within an agreed system of supervision, you will provide teacher release and work with the whole class, small groups and individuals to deliver learning activities and support the teaching.

You will hold an appropriate HLTA qualification or equivalent, have experience of this role working with children across a primary school setting and demonstrate the confidence to work with a class in the absence of the teacher.

If you are looking for a great career opportunity with the ability to demonstrate your expertise, skills and commitment to delivering the best learning provision for children, this is the place for you

We can offer successful applicants opportunities to:

- Play a significant part in the continuing development of our school supporting both personal and professional development.
- Lead and manage creative learning experiences for all.
- Enhance the education of our happy, hardworking and well behaved pupils who are keen to learn and achieve.
- Work within a strong team in a stimulating & spacious environment; a well-resourced setting, both inside and outside.
- Make a difference and influence the learning of many;
- A supportive and friendly team of fellow staff and Governors;

Further details can be found on the school website or requested by email. Visits to the school prior to application are strongly encouraged and welcomed by appointment.

Closing date: 09.00hrs Monday 15th June | Interviews: shortly after application

Thatcham Park School supports Equal Opportunity of employment, and positively encourages applications from people who fall within any of the nine protected characteristics under the Equality Act 2010. This School is committed to safeguarding children and promoting the welfare of children and young people and expects all staff and volunteers to share this commitment. We will ensure that all our recruitment and selection practices reflect this commitment. All shortlisted candidates will be asked to complete a criminal records self-disclosure form and successful candidates will be subject to Disclosure and Barring Service (DBS) checks along with other relevant employment checks. This role is exempt from the Rehabilitation of Offenders Act 1974.

Search Online

Visit our **online jobs directory** to browse all current listings...





CASTLEVIEW SCHOOL

Woodstock Avenue, Slough, Berkshire SL3 7LJ | Tel: 01753 810615 | Headteacher: Miss Rebecca Austin Lead | Email: recruitment@castleviewprimaryschool.co.uk

Lead Teaching & Learning Assistant – SEND Unit

Job Title: Lead Teaching & Learning Assistant – SEND Unit **Contract type:** Full-time, Permanent **Reports to:** SEND Team

Pay range: SCP 8 – SCP 12 plus Additional Responsibility Payment of £1,000.00

Working pattern: 39 weeks per year (Term-time + 5 INSET Days)

Working hours: 37 hours per week, Monday – Thursday between 08.00 – 16.00 and Friday between 08.00 – 15.30

Are you passionate about helping children with complex needs achieve their full potential?

We are excited to offer a unique opportunity for a Lead TLA within our SEND Unit. In this role, you will take the lead in establishing the provision and building strong communication with parents. You will work closely with and be supported by the SEND Team.

Purpose of the job:

- To support the work of the SEND Team in raising standards for pupils with Special Educational Needs in the SEND Unit.
- To provide specialist skills and knowledge at an advanced level in the SEND Unit.
- To lead specific sessions for pupils with SEND in the SEND Unit.
- To provide support in addressing the needs of pupils who require help to overcome barriers to learning.
- To set up the designated provision in the SEND Unit.
- To follow, maintain and promote the school core values.

Duties and Responsibilities:

- Use specialist skills/training/experience to support pupils across the primary age range in the SEND Unit.
- Assist with the implementation of EHCPs.
- Assist the SEND Teacher in raising the achievement of all pupils.
- Work with individual pupils or groups as required.
- Contribute to the preparation of lessons and assist in the selection and preparation of teaching resources to meet pupils' needs and interests.
- Supervise and assist individual or small groups of pupils in activities.
- Contribute to the maintenance of appropriate records.
- Carry out observations and assessments as appropriate.
- Carry out intervention programmes, in the classroom or other teaching area.
- Liaise with the SEND Team regarding the progress and future needs of the pupils.
- Lead teaching sessions.

Pupil Well Being and Personal Development:

- Assist with maintaining good behaviour of pupils and using individual behaviour strategies.
- Provide additional care for pupils with needs (learning, behavioural, physical, medical) as part of a planned programme.
- Build and maintain good relationships with pupils, ensuring the care, health and welfare of pupils always, including the willingness to dress and undress, the toileting, and the cleaning of pupils, where necessary after appropriate training.
- Assist pupils with physical needs and difficulties.
- Establish and maintain appropriate working relationships with parents, staff and other adults involved in pupils' education.
- Follow school procedures for safeguarding, reporting any concerns regarding pupils' safety and welfare to designated staff.

The Quality of Provision:

- Assist in the provision of activities for the pupils to encourage their physical, intellectual, emotional and social development.
- Maintain a high standard of provision which pupils can thrive in.
- Assist the SEND Team and contribute to resourcing and EHCP reviews as necessary.
- Maintain a safe and purposeful learning environment.
- Supervise pupils in different contexts, always ensuring their safety.
- Establish constructive relationships between all members of the school community, including parents, support staff and other agencies such as Educational Psychologists and Speech Therapists.
- Develop skills and knowledge of ICT, particularly in supporting pupils with Special Needs.

Staff Management and Development:

- Leads and manages Teaching & Learning Assistants in the room, fostering a shared sense of direction, pride, and motivation among staff.
- Monitors staff and ensure the effectiveness on education in line with policies, procedures and core values.
- Identifies staff training and developmental needs, planning with the SEND Team to ensure these needs are met.

Closing date: Monday 8th June 2026 at 10AM | Interview date: Week Commencing Monday 15th June 2026.

For further details and to apply see: <https://www.castleview.slough.sch.uk/Our-School/Staff-Vacancies/>

Castleview Primary School is committed to safeguarding and promoting the welfare of children, young people and vulnerable adults and expects all staff and volunteers to share this commitment. Any job offer will be subject to a satisfactory DBS, Medical checks and Employment References.

NEW JOB ALERTS TAILORED TO YOU

Get notified when new jobs relevant to you become available.

Visit our website to create your custom job alert!

schoolvacancies.co.uk/job-alerts





DOWNSWAY PRIMARY SCHOOL

Warbreck Drive, Tilehurst, Reading RG31 6FE

Tel: 0118 9421362

E-mail: office@downsway.w-berks.sch.uk

Web: www.downsway.w-berks.sch.uk



Teaching Assistant Required

**Fixed term contract: 3rd September 2026
to 23rd July 2027**

At Downsway Primary School we are a flourishing learning community in Tilehurst with a caring ethos and a strong team, committed to helping every child thrive and succeed.

We are looking for a teaching assistant who is:

- ✓ Able to work predominately with SEND children on a 1:1 basis under the direction of the class teacher, as well as working with small groups and whole class.
- ✓ Committed to developing good relationships with; staff, children, parents and outside agencies.
- ✓ Friendly, caring, hardworking and supportive with high expectations.

The role:

- £12.71 per hour
- Term time only
- 25 hours per week
- Working 9am to 3pm, Monday to Friday with a 1-hour unpaid lunch break.

If you are an enthusiastic and dedicated team player with experience of working with children and would like to be part of our friendly and committed school team, please contact the school office for an application pack or to arrange a visit.

Applications will be considered as they arrive and interviews arranged as appropriate. The position will remain open until an appointment has been made.

All applications and responses must be completed personally by the applicant and not generated by AI. The school has a commitment to safeguarding and promoting the welfare of children and expects all staff and volunteers to share this commitment. All shortlisted candidates will be asked to complete a criminal records self-disclosure form and successful candidates will be subject to an enhanced Disclosure and Barring Service (DBS) check, along with other relevant employment checks. We are an equal opportunities employer.



Enjoy Achieving

THATCHAM PARK CE PRIMARY SCHOOL

Park Avenue, Thatcham, Berkshire RG18 4NP

Headteacher: Mrs Alison Webster

Tel: 01635 870950 | e-mail: office@thatchampark.w-berks.sch.uk

Website: www.thatchampark.w-berks.sch.uk

SEN Specific Teaching Assistants

Various part-time hours available. Required September 2026

**Salary Band B/C £24,522 – £25,583 pro rata
(depending on qualifications and experience)**

We are seeking to appoint an enthusiastic and caring individual to join our experienced and dedicated teaching force.

Our children are looking for someone who:

- is kind, patient and has a good sense of humour
- understands confidentiality and safeguarding
- will have high expectations of their learning and behaviour
- will help them to achieve their very best
- has experience of supporting special educational needs or is willing to train and learn
- Grades A*-C in GCSE English and Maths, or equivalent

A passion and interest in supporting all children in a school setting is essential.

We can offer successful applicants:

- Well behaved children who are eager to learn
- Regular training, support and advice
- A warm, caring and welcoming environment in our well-resourced school.
- An opportunity to make a real difference to our children's learning.
- A supportive and friendly team of fellow staff and Governors;

Further details can be found on the school website or requested by email. Visits to the school prior to application are strongly encouraged and welcomed by appointment.

Closing date: 09.00hrs Monday 15th June | Interviews: shortly after application

Thatcham Park School supports Equal Opportunity of employment, and positively encourages applications from people who fall within any of the nine protected characteristics under the Equality Act 2010. This School is committed to safeguarding children and promoting the welfare of children and young people and expects all staff and volunteers to share this commitment. We will ensure that all our recruitment and selection practices reflect this commitment. All shortlisted candidates will be asked to complete a criminal records self-disclosure form and successful candidates will be subject to Disclosure and Barring Service (DBS) checks along with other relevant employment checks. This role is exempt from the Rehabilitation of Offenders Act 1974.

NEW JOB ALERTS TAILORED TO YOU

Get notified when new jobs relevant to you become available. Visit our website to create your custom job alert!



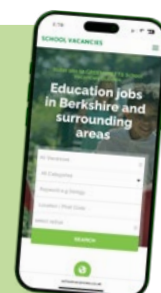
ADVERTISE NOW Simple Process, Low Cost.

Emailed weekly in term time to **6000+ subscribers** and listed on our **online jobs directory**, Greensheets gives you a direct line to educators and active job seekers.

6,000+ SUBSCRIBERS

28 YEARS OPERATING

Your go-to platform for teaching and education jobs in central southern England.





SONNING CHURCH OF ENGLAND PRIMARY SCHOOL

Ligugé Way, Sonning, Berkshire RG4 6XF | www.sonning.wokingham.sch.uk | operations@sonning.wokingham.sch.uk | Headteacher: Mr P Sherwood

TEACHING ASSISTANT

Sonning CE Primary School has a fantastic reputation that is fully deserved. It is a result of high academic achievement, our caring, nurturing environment and our deep-rooted ethos. At Sonning, we aim to equip our children with the skills they need to make positive choices in everything they do. Like the wise man who built his house upon the rock (Matthew 7:24-25), our vision is “building strong foundations for the years ahead”.

Our recent Ofsted report (July 2025) described our school as “exceptional” – this is an opportunity to work in an incredibly supportive, dedicated and passionate team.

We are looking for a teaching assistant to work within a classroom and support the teaching team and also support the individual needs of all children within the class, including those with SEND.

KEY DETAILS ABOUT THE ROLE

The role we are offering has the following key details:

- Grade 3 SCP 5 FTE £25,484.00 (Actual annual salary £16,859.50 based on 29 hrs 10 mins per week)
- Full time: 08:30 to 15:20; Monday to Friday, (60 minute lunch break)
- Required to start between 15.06.26 and 01.09.26

KEY DATES AND DETAILS FOR APPLYING

Please apply via the link on our website (vacancies page):

www.sonning.wokingham.sch.uk/page/?title=Job+vacancies&pid=116

- Closing date for applications: 07.07.26
- Applications will be processed on receipt

WHAT YOU WILL GAIN FROM WORKING WITH US

We are proud of our team and what we can offer staff who wish to join us. We recognise that joining a new school is as much about what we can provide as it is about what the successful applicant can give to us. **Therefore, we offer the following through our school and The Keys Academy Trust:**

- A dedicated team who go above and beyond for each other.
- Commitment to and support for your professional development in a range of areas.
- A vibrant, fun and welcoming staff and environment.
- Kind, supportive and very well-behaved pupils.
- Pastoral support for pupils, as well as wellbeing support for staff.

WHO ARE WE LOOKING FOR?

The successful candidate will have the following:

- A clear passion for working with children and helping them succeed.
- An understanding of how to support pupils individually or in groups by planning effective sessions.
- Experience of working with children.
- Have high expectations for standards of achievement and behaviour.
- Be able to work collaboratively as well as independently, and be a strong and supportive team player.
- Promote our Christian ethos, vision and values.
- Be a strong and supportive team player.

UNDERSTANDING THE SPECIFIC ROLE

You may work as a class TA as times, but will also work with pupils with additional needs. This may include working 1:1 with pupils with ASD or ADHD, MLD, SEMH and/or physical needs. **Your work may include the following:**

- Support children in delivering a personalised timetable that includes both learning (primarily English and Maths) and;
- Sensory/therapeutic activities such as sensory circuits, sensory activities (water and sand play), playing games and visiting our school guinea pigs.
- Emotional regulation work.
- Physio work with pupils.
- Breaking down activities/tasks and adapting tasks where needed to support pupils’ learning.

You will need to build strong relationships with pupils, have the highest expectations for them and be kind and caring. Flexibility is needed and a fun and slightly playful approach works, as well as being consistent and reliable. Your questioning must be strong.

The Trust is committed to safeguarding and promoting the welfare of children and young people and expects all staff and volunteers to share this commitment. Applicants must be willing to undergo checks with past employers and the Disclosure and Barring Service enhanced criminal records check. No agencies please.

NEW JOB ALERTS TAILORED TO YOU

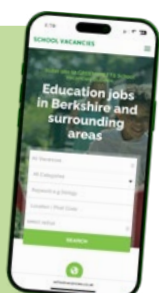
Get notified when new jobs relevant to you become available. Visit our website to create your custom job alert!



ADVERTISE NOW Simple Process, Low Cost.

Your go-to platform for teaching and education jobs in central southern England.

Emailed weekly in term time to **6000+ subscribers** and listed on our **online jobs directory**, Greensheets gives you a direct line to educators and active job seekers.





Shiplake CE Primary School
Memorial Avenue, Shiplake, Henley on Thames RG9 4DN

Teaching assistant

Salary Grade: Starting salary – Grade 4, point 4 FTE

To work as part of a team of staff supporting all children's needs within classes and monitoring and recording the progress of pupils.

School context:

Shiplake C.E. Primary School is a thriving village school at the heart of its community, known for its strong academic foundations, nurturing environment and close relationships where every child is valued and supported to flourish.

Guided by our Christian vision and the pillars of faith, learning, innovation and community, we encourage curiosity, resilience and compassion so pupils can thrive in school and beyond.

With dedicated staff, supportive governors and an engaged parent community, we work together to maintain high standards and continuous improvement, ensuring every member of our small school plays a role in shaping its culture and future.

As a Teaching Assistant you will take into account the pupils' individual needs and ensure children can access lessons and their content through appropriate clarification, explanations, equipment and materials. You will also support children with Special Educational Needs, ensuring they can access a curriculum appropriate to their needs in a safe and inclusive way.

Essential Criteria

Qualifications & Training

- Good standard of literacy and numeracy (GCSE English and Maths or equivalent).
- Willingness to undertake training associated with the role.
- Evidence of ongoing professional development.

Experience

- Experience working with children in a school or similar setting.
- Experience supporting learning or delivering small-group activities.
- Experience supporting children with additional needs.

Knowledge & Skills

- Understanding of the primary curriculum and how children learn.
- Ability to build positive relationships with pupils and staff.
- Strong communication skills, both written and verbal.
- Ability to manage behaviour positively and calmly.
- Ability to follow instructions and also use initiative when appropriate.
- Good organisational and time-management skills.

Personal Qualities

- Warm, patient and approachable.
- Reliable, flexible and proactive.
- Committed to safeguarding and promoting the welfare of children.
- Enthusiastic about supporting children's learning and development.
- Reflective and willing to learn.

Desirable Criteria

- Experience delivering specific interventions (e.g. phonics programmes, speech and language activities).
- Experience supporting pupils with EHCPs.
- First Aid training.
- Knowledge of SEND strategies and inclusive practice.
- Experience working across different year groups.

Shortlisting: 12th June 2026 | Interviews: to be confirmed

Further information about the role and an application form is available at:
<https://shiplakeprimary.org.uk/about/recruitment/>

Please email completed application forms to office.3810@shiplake.oxon.sch.uk



Falkland Primary School

Andover Road, Newbury, Berkshire RG14 6NU
Tel: 01635 44949 / 522945 | e-mail: chawkins@falkland.w-berks.sch.uk

Are you looking for a job that is exciting, rewarding and inspiring?

If the answer is yes then we are the school for you!

Teaching Assistants required

Starting September 2026

31.25 hours per week Monday – Friday, term time only.

Grade B – Salary £24,522 - £24,796 (pro rata),

Actual Salary ££17,477 - £17,672

Falkland School is seeking to appoint an enthusiastic teaching assistant to work with us. We are searching for a highly-motivated person who will support children in a mainstream classroom, working closely with teachers to support their education.

The TA will assist the classroom teacher to ensure the smooth and effective provision provided for the pupils. Ideally, we would like the successful candidate to be available to work 8.30 am – 3.15 pm each day.

The ability to build good working relationships with pupils and staff is key, as well as a willingness to learn and be flexible. If you feel that you have the enthusiasm and drive for this role we would like to hear from you.

Application is by school application form to Miss K Paxton, Finance Officer, at ffinance@falkland.w-berks.sch.uk the former including the names and email addresses of two appropriate referees.

Further details can be obtained from Miss Paxton, by email as above, or visit the school's website www.falklandprimaryschool.org

Closing date: Wednesday 10th June 12pm
Interviews: Week commencing Monday 15th June

The school has a commitment to safeguarding and promoting the welfare of children. The successful applicant will be required to undertake an enhanced DBS check, in addition to other pre-employment checks.

NEW JOB ALERTS TAILORED TO YOU

Get notified when new jobs relevant to you become available.

Visit our website to create your custom job alert!

schoolvacancies.co.uk/job-alerts





FEDERATION OF MOORLANDS & PARK LANE PRIMARY SCHOOLS

Headteacher Park Lane : Mrs Rachel McDonagh

Teaching Assistant

PARK LANE PRIMARY SCHOOL

Grade/Salary RG3 SCP 5-11

Actual salary £14,422 PA - £15,865 PA

25 hours per week • Term Time only

Working pattern similar to: 8.35am – 3.15pm

4 days a week and 8.35am – 12.15pm one day a week

The Governors of the Federation of Moorlands and Park Lane Primary Schools wish to appoint a Teaching Assistant to be based at Park Lane Primary School.

The successful applicant may be required to work at other sites within the Federation.

We are looking for someone who:

- Has experience of working with children within a school setting.
- Holds a Teaching Assistant NVQ (desirable not essential).
- Is passionate about children's learning and every child achieving their full potential.
- Has lots of energy, enthusiasm and patience.
- Is flexible and can work well within a team.
- Has a sense of humour.
- Has a good standard of literacy, numeracy and ICT skills to GCSE/NVQ standard.

We can offer:

- Friendly and enthusiastic children who want to learn.
- A caring, happy school with a clear vision for our continued improvement.
- Experienced, committed, friendly and supportive colleagues.
- High expectations of children's achievement and behaviour.

The post holder will be required to work with individual children and groups of children, to support the class teacher and to contribute towards the evaluation and modification of work programmes as required. The successful candidate will be a good communicator.

Application packs are available to download from the school's website: <https://www.parklaneps.org.uk>. Please do not send a CV. For the purposes of Equal Opportunities, we can only accept Reading Borough Council application forms.

Closing date: Midday, Monday 15 June 2026

Applications will be considered upon receipt. We reserve the right to close the vacancy early if we have received a sufficient number of applications.

Interviews: Monday 22 June 2026

This school is committed to safeguarding and promoting the welfare of children and young people, and expects all staff and volunteers to share this commitment. An Enhanced Disclosure and Barring Service check will be sought from the successful candidate. We will process personal data and sensitive personal data (also known as 'special categories of personal data') and criminal records data relating to you in accordance with our Data protection policy and in accordance with data protection laws. As part of our due diligence and safeguarding procedures, pre-employment checks for shortlisted candidates will include online searches for data.

Park Lane Primary School: School Road, Tilehurst, Reading RG31 5BD
T: (Juniors) 0118 937 5515 admin@parklane.reading.sch.uk
Website: <https://www.parklaneps.org.uk>



Emmbrook Junior School

Emmbrook Road, Wokingham RG41 1JR

Nurture, Grow, Thrive



Learning Support Assistant

Maternity Leave Cover to start September 2026 for one term

16 hours and 15 minutes per week

(8:30am to 12:00pm)

Grade 3 SCP 5 to SCP 6

£25,583 pa to £25,989 pa FTE

(actual salary will be pro rata)

We are looking for an enthusiastic Learning Support Assistant to join our hard working, friendly team at this popular school. This is a fixed term position to cover a period of maternity leave.

You will be required to provide personalised support for individual SEND children or support groups of children in class, as directed by the class teacher. Experience of working with children is preferred. Experience of working with ASD or ADHD children would be an advantage.

The successful applicant will be flexible and a good communicator, who enjoys working as part of an enthusiastic team, as well as being able to use their own initiative.

Visits to the school are warmly welcomed. For more information and an application form, please contact Claire Freeman, Office Manager, on **0118 978 4940** or by email at cfreeman@emmbrook-jun.wokingham.sch.uk

We welcome applicants from under-represented groups including ethnicity, gender, transgender, age, disability, sexual orientation or religion. The school is committed to safeguarding and promoting the welfare of children and expects all staff and volunteers to share this commitment. The successful applicant will be required to obtain an Enhanced Disclosure from the DBS.

Closing date for applications is 5th June 2026.

Interviews w/c 8th June 2026.

For an application form or to arrange a visit please contact Claire Freeman, Operations Manager (admin@emmbrookjun.wokingham.sch.uk)



Emmbrook Junior School is an academy and part of The Circle Trust, a charitable company limited by guarantee registered in England and Wales, company number 11031096, registered at The Circle Trust, The Oval Offices, c/o St Crispin's School, London Road, Wokingham, Berkshire, RG40 1SS. General Enquiries: 0118 3381961 contact@thecircletrust.co.uk

ADVERTISE NOW
Simple Process, Low Cost.

Emailed weekly in term time to **6,000+ subscribers** and listed on our **online jobs directory**, Greensheets gives you a direct line to educators and active job seekers. Your go-to platform for teaching and education jobs in central southern England.



Teacher Tapp questions give snapshot of KS2 SATs impact

Teacher Tapp, the daily survey app for teachers, asked a number of questions around KS2 SATs this year, helping to give a picture of the impact on teachers and children. Teacher Tapp poses daily survey questions on a range of topics to teachers who have signed up to the app. The questions are designed to take no more than five minutes in total to complete, with around 10,000 teachers typically responding each day, although this varies from question to question.

Before the KS2 SATs took place, Teacher Tapp had questions for year 6 teachers, asking if they had completed all their work in preparation for SATs during timetabled lessons. 15 per cent of year six teachers had 'comfortably' completed all the work for SATs during timetabled lessons, 54 per cent had 'just about' squeezed it in, and 31 per cent hadn't completed it all in timetabled lessons. Year 6 teachers were also asked about their wellbeing, with those who hadn't covered all the SATs content almost twice as likely to report feeling under strain 'all of the time', compared to those who had covered the content (16 per cent vs 9 per cent). Meanwhile, the impact of the SATs was also felt more widely, with more than half (50 per cent) of primary teachers reporting that they lost a teaching assistant/learning support assistant because of the assessments.

Teachers were also asked about the impacts of the SATs that they observed on pupils. More than two-thirds (68 per cent) of primary teachers said they saw students showing signs of upset or distress. Teacher Tapp has also asked this question in previous years, and this is very slightly up on 2025 (66 per cent), but an improvement on 2024, when it stood at 81 per cent. Teachers in schools with the most pupils eligible for Free School Meals (FSM) were more likely to report seeing distressed students than those in the least deprived schools (74 per cent to 59 per

cent). Teachers in schools that ran extra SATs preparation sessions were also more likely to report student distress than those in schools that didn't (76 per cent vs 68 per cent). However, it appears that it is not simply explained by the most deprived schools running more SATs preparation sessions than the least deprived schools: among schools with the highest FSM levels, teachers in schools running extra sessions were still more likely to report distressed students than those in schools that didn't (82 per vs 71 per cent). Relatedly, teachers were also asked whether they were aware of any pupils whose parents had kept them at home because of the KS2 SATs. More than one in ten (12 per cent) said that they were. Again, this is a question Teacher Tapp have asked over a number of years, and this year's figure is much higher than before the coronavirus pandemic (it stood at just 4 per cent in 2019), but lower than the 15 per cent recorded in 2024.

Finally, questions were asked around whether teachers involved in the tests have done things that would count as maladministration, or have been encouraged to do them. In positive news, 85 per cent said that they have never engaged in maladministration or been encouraged to do so. Of the 15 per cent who said they had, some the types of maladministration reported included: 48 per cent saying they had pointed out an incorrect answer; 46 per cent saying that a reader or scribe had been used when that isn't the normal classroom practice; 27 per cent gave (unauthorised) extra time and 26 per cent said they had sounded spellings in a helpful way (e.g. ex-tin-gu-ish). It was much rarer for teachers to report giving an answer to a pupil (5 per cent), and amending papers after they had been completed (1 per cent).

Further details of the survey findings and methodology are available at: <https://teachertapp.com/articles/ks2-sats-special-plus-screen-time-and-inappropriate-comments/>

NEW JOB ALERTS TAILORED TO YOU

Get notified when new jobs relevant to you become available.

Visit our website to create your custom job alert!

schoolvacancies.co.uk/job-alerts



Record half term heat sees call for maximum working temperature

The half term break has coincided with record-breaking high temperatures for many parts of the country, including southern England. The record for the hottest recorded May temperature in the UK was broken, with a temperature of 35.1°C recorded at Kew Gardens in London on 26 May. The previous record of 32.8°C was set in both 1922 and 1944. The heatwave coincided with the half term break for the vast majority of schools, but has once again raised the question of whether a maximum safe working temperature should be introduced. There is currently no legal limit on how hot or cold a workplace should be, with employers required only to ensure temperatures are 'reasonable'.

Research last year from the Department for Education (DfE) – conducted as a collaboration with the Met Office and University College London – found that without action pupils could potentially lose up to 12 days of learning per year on average due to climate change. However, this figure included days lost to other effects of climate change, such as flooding, as well as extreme heat. The same research found that on average some schools may already be experiencing one or two days a year when indoor temperatures reach 35°C, making learning very difficult and with particular concerns around the impact on the summer exam season.

Last week the UK's independent adviser on tackling climate change,

the [Climate Change Committee](#) (CCC), published a [report](#) advocating for the introduction of maximum temperature regulations in workplaces, which would include schools and colleges. 'Maximum working temperature regulations would address the increasing risks that high temperatures pose to workers' safety and incentivise the deployment of the necessary cooling', it says.

The CCC report also projects that the average number of days per year that indoor temperatures reach or exceed 35°C in 20,000 English schools will increase by 70 per cent compared to the present day, leading to 8.2 average days per year of learning lost per pupil. They also note that taking an exam on a 32°C day leads to around a 10 per cent lower likelihood of passing, compared to a 22°C day – so increased temperatures will lead to lower educational outcomes. The report proposes a target for 2050 of the internal temperature of learning environments remaining between 16°C and 25°C.

Daniel Kebede, general secretary of the National Education Union, echoed the CCC's call for the introduction of maximum temperature limits for schools, saying it would 'encourage investment into making schools heat-resilient, with mitigations such as air conditioning, which would protect learning, the important exam period, and keep staff and children safe and comfortable'.

Paul Whiteman, general secretary

of the NAHT school leaders' union, said that schools were already acting to mitigate the effects of high temperatures wherever they could, including 'straightforward adjustments such as limiting the time spent in the sun during breaks, ensuring additional water is available, making adjustments to uniform expectations where appropriate, and ventilating classrooms as best they can'.

Meanwhile Pepe Di'lasio, general secretary of the Association of School and College Leaders, argued that many school buildings were ill-suited to high temperatures. 'A big part of the problem is that ageing school buildings often have poor ventilation, leading to uncomfortable conditions that can result in lost learning', he said. He called on the government to invest in the school estate to mitigate against extreme temperatures as much as possible. Mr Whiteman also called on the DfE to act 'urgently to improve and modernise school buildings', with 'a focus on ventilation and, potentially, air conditioning'.

The government currently publishes [guidance online for schools and early years settings](#) on looking after children during hot weather, including recognising the symptoms of heat stress, heat exhaustion and heatstroke. Schools are encouraged to relax uniform rules, especially during amber or red Heat-Health Alerts, to encourage children outdoors to stay in the shade where possible, and to provide and encourage children to drink plenty of water.

NEW JOB ALERTS TAILORED TO YOU

Get notified when new jobs relevant to you become available.

Visit our website to create your custom job alert!

schoolvacancies.co.uk/job-alerts



FREE Primary PE Conference to be hosted by Reading FC Community Trust in June

The Primary PE Conference, hosted by Reading FC Community Trust, is returning on Friday 19th June.

The event brings together teachers, TAs, HLTAs, sports coaches, sports coaching apprentices and independent school PE staff to share new ideas, discuss best practice and to bring industry leading insight into current topics that effect the Primary PE landscape.

GREENSHEETS is proud to sponsor the event this academic year, keeping it free to attend for those working in a Primary School setting.

Those attending will also be entered into a prize draw to win teaching resources they can take back into their school setting.

Check out our 2024 event highlights by clicking here: <https://www.youtube.com/watch?v=vit-XWP-5No>

WHERE & WHEN

- Friday
19th June
- 09:30 – 15:30
- Select Car Leasing
Stadium, RG2 0FL



FIND OUT MORE AND BOOK YOUR PLACE USING THE BUTTON ON THE RIGHT OF THIS PAGE

 **READING FC
COMMUNITY
TRUST**

PRIMARY PE CONFERENCE

Discover new ideas, gain help and support
and network with PE colleagues

Friday 19th June 2026 09:30 - 15:30
Free to attend

Event proudly sponsored by
GREENSHEETS
Local education jobs, direct to you

